

Our school at a glance



Postal address 74 Auckland Street Gladstone 4680

Phone (07) 4979 7222

Fax (07) 4972 2396

Email the.principal@gladcentss.eq.edu.au

Webpages Additional reporting information pertaining to Queensland state schools is located on the [My School](#) website and the [Queensland Government data](#) website.

Contact Person Mrs Leanne Martin, Principal.

Principal's foreword

Introduction

Our school has a long and proud history. As the first school in Gladstone, beginning in 1861, our students have been part of the Gladstone Region's growth from a small rural town to a modern industrial city serviced by excellent deep water port facilities.

We are justly proud of the achievements of our school and of its present and past students and staff. We have developed productive partnerships with our students, parents, school and local community, and together, we are plotting a course for developing each of our students to realise their individual and collective potential.

This report provides parents and members of the school community with information about the school's activities and performance over the past year. It highlights our strengths and identifies areas for development and improvement during 2014.

A hard copy of this report is available from the school office.

School progress towards its goals in 2013

In 2010 our school critically examined our learning achievements and school practices through a Quadriennial Review process and established key directions. In 2012 Gladstone Central State School's progress towards these included:

Teaching and Learning:

- Improvement in the performance of all students in Reading, Maths and Language Conventions.
- Closing the gap in educational outcomes for Indigenous students, in particular achievement and attendance.
- Improvement in the % of students who reach top 2 bands for English and Maths.

Community Relationships:

- Supported children's holistic wellbeing through fostering skills and attributes that encouraged them to be healthy, green and fair citizens
- Continued building productive partnerships with our community and beyond.

Supportive Resources

- Continued to manage resources effectively to strengthen delivery of teaching and learning in our school.
- Implemented parent and community engagement strategies that supported improved student outcomes.

Our school at a glance

Future outlook

Our future outlook has as its foundation, a positive and strong culture of continual improvement of student achievement by both students and staff and the professional growth of our staff to meet the challenges of curriculum innovation. In 2014 we will continue to focus on:

Pedagogy

- Implement targeted initiatives to improve the % of students who reach top 2 bands for English and Maths.

Professional Practice

- Support teachers to transform teaching and learning practice to improve student learning outcomes through the use of rich digital learning environments engaging our diverse range of students.
- Continue to manage resources effectively to strengthen delivery of teaching and learning in our school.

Performance

- Improving the performance of **all** students in English, Maths and Science, targeting 80% to achieve National Mean Standards in all areas by 2014.
- Closing the gap in educational outcomes for Indigenous students through a particular focus on achievement.

Partnership

- Implement further parent and community engagement strategies that support improved student outcomes. As the demographics of our school changes, we continue to refine our key directions and focus on the development of partnerships with other schools and organisations in our district to support the academic and social growth of our young people.
- Supporting children's holistic wellbeing through fostering skills and attributes that encourage them to be healthy, green and fair citizens
- Continue building productive partnerships with our community and beyond.



School Profile

Coeducational or single sex: Coeducational

Year levels offered in 2013: Prep Year - Year 7

Total student enrolments for this school:

	Total	Girls	Boys	Enrolment Continuity (Feb – Nov)
2011	241	115	126	83%
2012	228	111	117	84%
2013	226	111	115	89%

Student counts are based on the Census (August) enrolment collection.

Characteristics of the student body:

Gladstone Central State School was established in 1861 as the first school in Gladstone. Our school now occupies a central position in the city, close to the central business district. Our school is coeducational and caters for students from Prep to Year 7.

Our school services a wide community comprising the city area, inner residential suburbs and the wider

Our school at a glance

community. Many of our current enrolments are drawn from outside our school catchment area. The relatively small student population in comparison to other local schools is often cited by parents as a reason for choosing to enrol their child at our school. Our physical location in the city provides our students with easy access to a variety of community resources and extra curricula activities.

The population is a heterogeneous mix in terms of combined family income, ethnic backgrounds and education. Our school has an active parent group who assist in the strategic direction setting for our school and as parent volunteers in our classrooms. Our school community, as individuals and as a group, supports and encourages the adoption of the values and beliefs of our school.

Average Class sizes

Phase	Average Class Size		
	2011	2012	2013
Prep – Year 3	22	22	23
Year 4 – Year 7 Primary	25	25	23
Year 7 Secondary – Year 10			
Year 11 – Year 12			

School Disciplinary Absences

Disciplinary Absences	Count of Incidents		
	2011	2012	2013
Short Suspensions - 1 to 5 days	43	27	3
Long Suspensions - 6 to 20 days	2	0	0
Exclusions	0	0	0
Cancellations of Enrolment	0	0	0

Curriculum offerings

Our distinctive curriculum offerings

Our curriculum, based on the Australian Curriculum, focuses on:

- A broad range of offerings that cater for the individual, cooperative and competitive needs of students
- As a Technical Primary School emphasis is placed on Maths, Science Technology and Engineering.
- English, Maths and Science Blocks as a teaching strategy
- An Intensive Extension and Support Program to support and extend students.
- A gifted education program
- Social moderation of student results
- Daily Physical Fitness
- Perceptual Motor Programs in Early Phase Classrooms
- Extended Learning Programs with Cluster schools to enrich gifted students learning

Our school at a glance

Extra curricula activities

- Instrumental Music – Woodwind, Brass and Percussion
- Dance Fever Program
- Annual School Concert and Fancy Dress Dance
- Eisteddfod performances in instrumental music and vocals
- Gladstone Area Combined Schools Musical
- Representative Sport at school, district and regional level for senior primary students
- Participation in a variety of school sporting teams – including soccer, netball, rugby league, AFL, hockey, softball and volleyball
- Premier's Reading Challenge and Readers Cup
- Toolooa Supper Challenge
- Spelling Bee
- Maths Competition
- Robotics Competition
- Lego Club
- School camp for Years 7 and excursion for Years Prep to Year 7

How Information and Communication Technologies are used to assist learning

iKids demand seamless access between, school, work, home and play. They work digitally in ways that pervade and impact on every aspect of their schooling and use personalized pathways to learning success. Teachers and students explore new ways of learning and teaching and develop valuable skills and knowledge necessary to inquire, create, communicate and operate in our technologically connected world.

To enable this students have access to a class sized computer laboratory for whole class skill development and internet access. Classrooms and Mini Hubs located across the school are equipped with interactive whiteboards and internet access and all students, particularly from Years 3 - 7, have email capability.

ICT is a cross curricular priority in all Key Learning Areas with the view of teachers utilizing resources such as interactive whiteboards into their daily teaching. Resources such as iPads, iTouches, webcams, robots, digital microscope, digital cameras and a video camera available for use throughout the school. Teachers and students are encouraged to access Education Queensland specific sites such as Learning Place.

Students are encouraged to:

- * Access learning everywhere and anytime in real time
- * Locate, filter, tap into and adapt knowledge and technologies to be productive
- * Create, critique and publish work in various ways to share with others.
- * Communicate, participate, collaborate globally in a variety of ways with a variety of others.
- * Live and safely operate in a digital world

In order to ensure we are engaging our 21st Century learners, our school is committed to ensuring we have available to all students the technology required on a daily basis. We also recognise that when it comes to teaching and learning the focus needs to be on appropriate use of technology to support learning.

Teachers are ensuring they continue to keep up with the latest technologies and undertake professional development on a regular basis to enhance their knowledge and utilisation of technology to enhance their teaching.

Social climate

Our students and parents regularly report that our school is a good school to attend and, as individuals, believe that students are well behaved.

Our school at a glance

Underpinning all that we do a Central is The Steering for Success Program, which addresses matters related to school-wide behaviour, morale, and improvement. As the program title suggests, the Steering for Success Program promotes excellence among those who work at or attend Gladstone Central State School.

The Steering for Success Program incorporates The Responsible Behaviour Plan, High Five Bully Prevention Strategy, The School Creed, school-wide rules, classroom management plans, Anchors Up incentives and awards.

. All the adults in our school are expected to model and teach exemplary school citizenship behaviours. Our students will be expected to learn outstanding behaviour as they progress through their educational experiences at our school. Through the Steering for Success Program, most all of a child's educational and behavioural experiences can be taught, monitored, and evaluated.



Our School Wide Positive Behaviour Program (including our Steering for Success bullying strategy) is supported by school staff, community members (including Brekky Club and Pyjama Angels), and also by outreach services comprising of Chaplain Guidance Officers, Behaviour Support Teams, Advisory Visiting Teachers and our Adopt-a-cops.

The Gladstone Central State School is committed to providing quality learning opportunities that enable all students to achieve within safe, supportive and disciplined learning environments. The school does not tolerate bullying in any form. All members of the school community are committed to ensuring that each child is provided with a safe, healthy and supportive environment in which to learn and that the values of respect, responsibility, integrity and doing your best are promoted and consistently displayed.



Parent, student and staff satisfaction with the school

Both the parent community and the student body identify a high level of satisfaction with the school and the curriculum enacted at the school. The student body very strongly supports the satisfaction measure that they are happy to go to Gladstone Central State School. The staff of Gladstone Central State School regards the positive relationships they enjoy with the students as key elements of their overall satisfaction, as well as noting that the relationships between staff create a highly successful, professional team that works effectively for the students in their care.

Gladstone Central State School values the contributions offered by the parent/caregiver community, the student body and the staff. Together these stake-holders are able to enhance the opportunities provided for all our students by identifying areas of approval and success as well as areas for reflection and focus.

Our school at a glance

Performance measure (Nationally agreed items shown*)

Percentage of parents/caregivers who agree that:	2012	2013
their child is getting a good education at school (S2016)	100%	100%
this is a good school (S2035)	100%	93%
their child likes being at this school* (S2001)	100%	100%
their child feels safe at this school* (S2002)	100%	100%
their child's learning needs are being met at this school* (S2003)	94%	100%
their child is making good progress at this school* (S2004)	94%	100%
teachers at this school expect their child to do his or her best* (S2005)	100%	100%
teachers at this school provide their child with useful feedback about his or her school work* (S2006)	88%	94%
teachers at this school motivate their child to learn* (S2007)	94%	94%
teachers at this school treat students fairly* (S2008)	100%	100%
they can talk to their child's teachers about their concerns* (S2009)	100%	100%
this school works with them to support their child's learning* (S2010)	94%	88%
this school takes parents' opinions seriously* (S2011)	100%	100%
student behaviour is well managed at this school* (S2012)	88%	87%
this school looks for ways to improve* (S2013)	100%	92%
this school is well maintained* (S2014)	100%	93%

Performance measure (Nationally agreed items shown*)

Percentage of students who agree that:	2012	2013
they are getting a good education at school (S2048)	100%	100%
they like being at their school* (S2036)	100%	98%
they feel safe at their school* (S2037)	100%	100%
their teachers motivate them to learn* (S2038)	100%	98%
their teachers expect them to do their best* (S2039)	100%	100%
their teachers provide them with useful feedback about their school work* (S2040)	100%	98%
teachers treat students fairly at their school* (S2041)	100%	91%
they can talk to their teachers about their concerns* (S2042)	100%	94%
their school takes students' opinions seriously* (S2043)	100%	93%
student behaviour is well managed at their school* (S2044)	100%	89%
their school looks for ways to improve* (S2045)	100%	96%
their school is well maintained* (S2046)	100%	100%
their school gives them opportunities to do interesting things* (S2047)	100%	98%

Our school at a glance

Performance measure

Percentage of school staff who agree that:	2013
they enjoy working at their school (S2069)	100%
they feel that their school is a safe place in which to work (S2070)	100%
they receive useful feedback about their work at their school (S2071)	94%
students are encouraged to do their best at their school (S2072)	100%
students are treated fairly at their school (S2073)	100%
student behaviour is well managed at their school (S2074)	100%
staff are well supported at their school (S2075)	94%
their school takes staff opinions seriously (S2076)	94%
their school looks for ways to improve (S2077)	100%
their school is well maintained (S2078)	100%
their school gives them opportunities to do interesting things (S2079)	88%

* Nationally agreed student and parent/caregiver items were incorporated in the School Opinion Survey in 2012.

Percentage of respondents who Somewhat Agree, Agree or Strongly Agree with the statement. Due to a major redevelopment of the surveys (parent/caregiver and student in 2012; staff in 2013), comparisons with results from previous years are not recommended.

DW = Data withheld to ensure confidentiality.

Involving parents in their child's education

A close relationship between parents, the community and school enhances the education of students. Parents are actively encouraged to participate in a range of school activities.

An important and enthusiastic part of our school family is our Parents & Citizens' association. You will not have witnessed a more supportive or active group of parents who work tirelessly to continue to enhance our school. An active Parents and Citizens' Association meet monthly and work in close liaison with the school's Administration in setting strategic direction and monitoring budgets and planning.

The P&C has a positive input into the future expectations and resources required by teachers to provide quality educational choices for students' educational progression. The Tuckshop convenor and parent helpers provide healthy meals for students and staff.

Parents are encouraged to play vital roles in assisting students learning and we welcome helpers in classrooms, excursions and culmination/celebration of learning events. Parent participation in celebratory school and classroom events such as end of term parades, graduation and badge presentation ceremonies, Anzac Day service, Education Week and Under 8s activities are also part of our school program.

Strong communication is encouraged between home and school. Academic Reporting to parents occurs at the following times:

Term 1- Parent Information Night,

End of Term 2 - iSMARTs sent home in weeks 4 & 7 and a written report at terms end.

End Term 3 - Interviews with parent in week 1 and iSMARTs sent home in weeks 4 & 7

End of Term 4 - iSMARTs sent home in weeks 4 & 7 and a written report at terms end.

Regular information dispersal via newsletters, website, Facebook, school parades, class newsletters is part of the school process.

Reducing the school's environmental footprint

Data is sourced from school's annual utilities return and is reliant on the accuracy of these returns. Students and staff are committed to minimise the use of these resources and where possible reduce the carbon footprint of the school.

As part of our commitment to reducing its impact on the environment Gladstone Central State School is an Earth Smart School and Reef Guardian School. The school has a School Environment Management Plan which encourages staff and student to reduce, reuse, repurpose and recycle every day.

	Environmental footprint indicators	
	Electricity kWh	Water kL
2010-2011	121,403	11,467
2011-2012	131,330	3,162
2012-2013	128,585	3,897

The consumption data is sourced from the validated utilities expenditure return which the school submits at the end of each financial year. The data provides an indication of the consumption trend in each of the utility categories which impact on the schools environmental footprint.

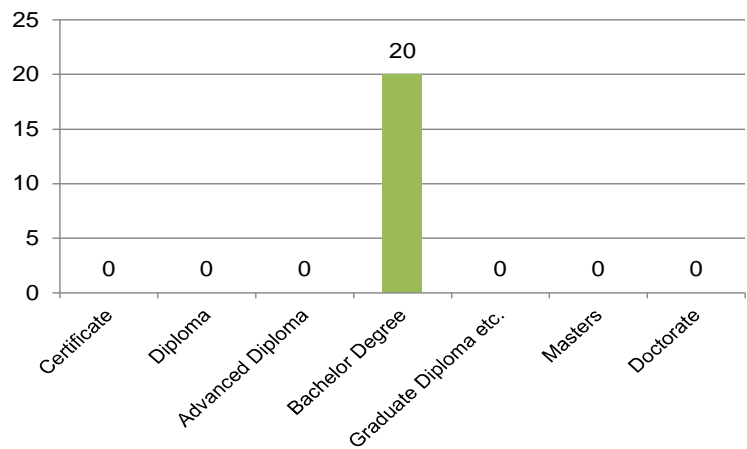
Our staff profile

Staff composition, including Indigenous staff

2013 Workforce Composition	Teaching Staff *	Non-teaching Staff	Indigenous Staff
Headcounts	13	13	<5
Full-time equivalents	12	9	<5

Qualifications of all teachers

Highest level of attainment	Number of Teaching Staff *
Certificate	0
Diploma	0
Advanced Diploma	0
Bachelor Degree	20
Graduate Diploma etc.	0
Masters	0
Doctorate	0
Total	20



* Teaching Staff includes School Leaders

** Graduate Diploma etc. includes Graduate Diploma, Bachelor Honours Degree, and Graduate Certificate

Expenditure on and teacher participation in professional development

The total funds expended on teacher professional development in 2013 were \$22648

The major professional development initiatives are as follows:

- Explicit Instruction
- Reading
- Maths
- ICT
- Student Engagement
- Gifted Education
- Special Needs

All staff participate in regular coaching and mentoring for their professional growth.

Our staff profile

Average staff attendance

	2011	2012	2013
Staff attendance for permanent and temporary staff and school leaders.	96%	96%	98%

Proportion of staff retained from the previous school year

From the end of the previous school year, 92% of staff was retained by the school for the entire 2013 school year.

School income broken down by funding source

School income broken down by funding source is available via the *My School* website at <http://www.myschool.edu.au/>.

To access our income details, click on the *My School* link above. You will then be taken to the *My School* website with the following 'Find a school' text box.

Find a school

Search by school name

Search by suburb, town or postcode

Sector Government
 Non-government

Where it says '**Search by school name**', type in the name of the school you wish to view, and select **<GO>**. Read and follow the instructions on the next screen; you will be asked to accept the **Terms of Use** and Privacy Policy before being given access to the school's *My School* entry web page.

School financial information is available by selecting '**School finances**' in the menu box in the top left corner of the school's entry web page. If you are unable to access the internet, please contact the school for a paper copy of income by funding sour

Performance of our students

Key student outcomes

Student attendance	2011	2012	2013
The overall attendance rate for the students at this school (shown as a percentage).	91%	92%	93%
The overall attendance rate in 2013 for all Queensland state Primary schools was 92%.			

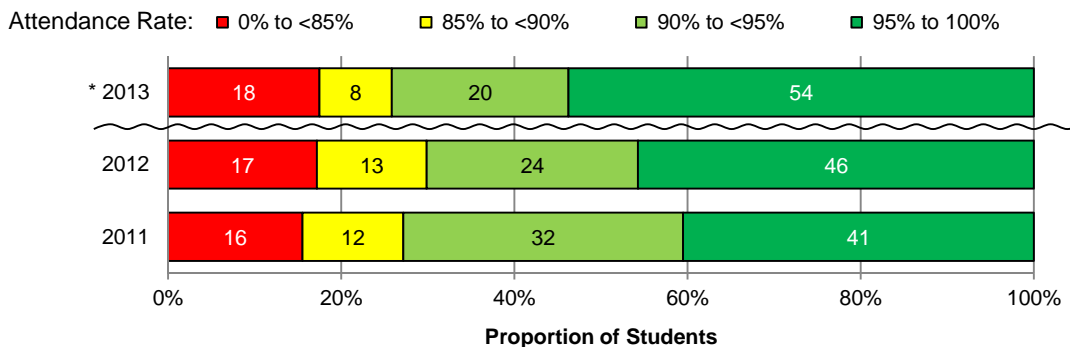
Student attendance rate for each year level (shown as a percentage)

	Year 1	Year 2	Year 3	Year 4	Year 5	Year 6	Year 7	Year 8	Year 9	Year 10	Year 11	Year 12
2011	89%	94%	91%	90%	87%	91%	94%					
2012	93%	89%	95%	92%	92%	89%	92%					
2013	93%	94%	92%	93%	92%	93%	91%					

DW = Data withheld to ensure confidentiality.

Student Attendance Distribution

The proportions of students by attendance range.



* The method for calculating attendance changed in 2013 – care should be taken when comparing data from 2013 to that of previous years.

Description of how non-attendance is managed by the school

Non-attendance is managed in state schools in line with the DET policies, SMS-PR-029: Managing Student Absences and SMS-PR-036: Roll Marking in State Schools, which outline processes for managing and recording student attendance and absenteeism.

As part of the Every Day Counts, a statewide initiative addressing the issue of student attendance at school, Gladstone Central State School actively promotes the importance of regular attendance at school.

We advocate the Every Day Counts key messages:

Performance of our students

- all children should be enrolled at school and attend on every school day
- as a school we monitor, communicate and implement strategies to improve regular school attendance
- truanting can place a student in unsafe situations and impact on their future employability and life choices
- attendance at school is the responsibility of everyone in the community.

Non-attendance is managed in line with the DET policies, SMS-PR-029: Managing Student Absences and SMS-PR-036: Roll Marking processes are also aligned to DET policies for managing and recording student attendance and absenteeism.

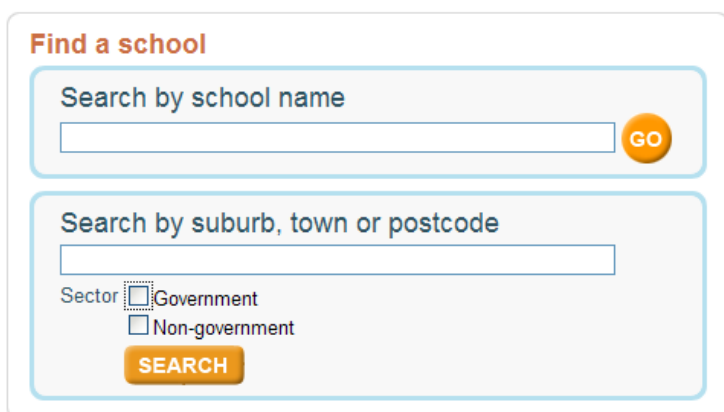
Rolls are marked twice, once in the morning and once in the afternoon, each day. Parents are notified of absences via SMS text, letters home and phone calls as required.

Students with 100% attendance are recognised with certificates at the end of each semester.

National Assessment Program – Literacy and Numeracy (NAPLAN) results – our reading, writing, spelling, grammar and punctuation, and numeracy results for the Years 3, 5, 7 and 9.

Our reading, writing, spelling, grammar and punctuation, and numeracy results for the Years 3, 5, 7 and 9 are available via the My School website at <http://www.myschool.edu.au/>.

To access our NAPLAN results, click on the *My School* link above. You will then be taken to the *My School* website with the following 'Find a school' text box.



The screenshot shows a search interface titled "Find a school". It contains two main search sections. The first section is "Search by school name", which includes a text input field and a blue "GO" button. The second section is "Search by suburb, town or postcode", which includes a text input field, a "Sector" dropdown menu with "Government" and "Non-government" options, and a blue "SEARCH" button.

Where it says 'Search by school name', type in the name of the school whose NAPLAN results you wish to view, and select <GO>.

Read and follow the instructions on the next screen; you will be asked to accept the **Terms of Use** and Privacy Policy before being able to access NAPLAN data.

If you are unable to access the internet, please contact the school for a paper copy of our school's NAPLAN results.

Achievement – Closing the Gap

Gladstone Central State School has a whole school Intervention/Extension Plan. Every child is supported either with intervention or extension for a semester each year. Year 3, 5 & 7 are focused on during Semester 1 and the rest of the school during Semester 2. A key aspect of that plan is the individual focus on our indigenous students.

To ensure each individual indigenous child is supported and as part of our current Closing the Gap Strategy, we currently employ a teacher-aide 1 day per week. In this role, supported by the Head of curriculum, the teacher aide, will complete Individual Education Plans for all Indigenous students identifying current attainments and planning for improvements. These plans address academic achievement, social well-being and attendance.

Performance of our students

One to one Intervention programmes have been implemented for all Indigenous students who are identified as being below NBM for Reading, Writing and Number. Classroom teachers and GEMs collaborate in the creation of an extension programme for high achieving indigenous students. The HOC conducts 3 workshops for parents (SaR, SaW & SaML) to build the capacity of parents as 'first teachers'.

Another integral part of Central's Closing the Gap Strategy is the use of trained Bandscales/ESL teachers for support of teaching staff to work with our Indigenous students. Resources have also been purchased to support the established Indigenous Parent Group with home readers suitable for Indigenous PrePrep - 3 students. These are housed at the PCEC to allow easy borrowing through the toy library.

With only a small Indigenous cohort we are unable to disclose information about their NAPLAN performance or attendance data.